



This is a digital copy of a book that was preserved for generations on library shelves before it was carefully scanned by Google as part of a project to make the world's books discoverable online.

It has survived long enough for the copyright to expire and the book to enter the public domain. A public domain book is one that was never subject to copyright or whose legal copyright term has expired. Whether a book is in the public domain may vary country to country. Public domain books are our gateways to the past, representing a wealth of history, culture and knowledge that's often difficult to discover.

Marks, notations and other marginalia present in the original volume will appear in this file - a reminder of this book's long journey from the publisher to a library and finally to you.

### Usage guidelines

Google is proud to partner with libraries to digitize public domain materials and make them widely accessible. Public domain books belong to the public and we are merely their custodians. Nevertheless, this work is expensive, so in order to keep providing this resource, we have taken steps to prevent abuse by commercial parties, including placing technical restrictions on automated querying.

We also ask that you:

- + *Make non-commercial use of the files* We designed Google Book Search for use by individuals, and we request that you use these files for personal, non-commercial purposes.
- + *Refrain from automated querying* Do not send automated queries of any sort to Google's system: If you are conducting research on machine translation, optical character recognition or other areas where access to a large amount of text is helpful, please contact us. We encourage the use of public domain materials for these purposes and may be able to help.
- + *Maintain attribution* The Google "watermark" you see on each file is essential for informing people about this project and helping them find additional materials through Google Book Search. Please do not remove it.
- + *Keep it legal* Whatever your use, remember that you are responsible for ensuring that what you are doing is legal. Do not assume that just because we believe a book is in the public domain for users in the United States, that the work is also in the public domain for users in other countries. Whether a book is still in copyright varies from country to country, and we can't offer guidance on whether any specific use of any specific book is allowed. Please do not assume that a book's appearance in Google Book Search means it can be used in any manner anywhere in the world. Copyright infringement liability can be quite severe.

### About Google Book Search

Google's mission is to organize the world's information and to make it universally accessible and useful. Google Book Search helps readers discover the world's books while helping authors and publishers reach new audiences. You can search through the full text of this book on the web at <http://books.google.com/>

D 101.11.  
11-2300-351-15-1

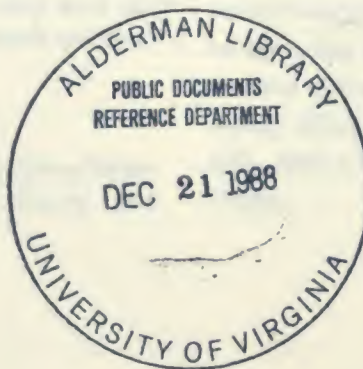
TM 11-2300-351-15-1

DEPARTMENT OF THE ARMY TECHNICAL MANUAL

INSTALLATION OF RADIO SET AN/GRC-106 IN  
TRUCK, 1/4-TON, 4 BY 4, M151

Headquarters, Department of the Army, Washington, D.C.  
29 April 1966

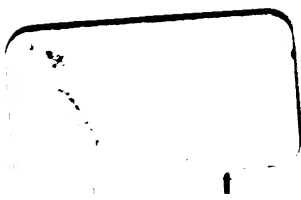
|  | Paragraph | Page |
|--|-----------|------|
| CHAPTER 1. INTRODUCTION                      |           |      |
| Scope .....                                  | 1-1       | 3    |
| Index of publications .....                  | 1-2       | 3    |
| Forms and records .....                      | 1-3       | 3    |
| CHAPTER 2. INSTALLATION                      |           |      |
| SECTION I. Service upon receipt of equipment |           |      |
| Unpacking .....                              | 2-1       | 5    |
| Checking unpacked equipment .....            | 2-2       | 5    |
| SECTION II. Equipment installation           |           |      |
| Tools required for installation .....        | 2-3       | 5    |
| Installation instructions .....              | 2-4       | 5    |
| APPENDIX REFERENCES .....                    |           | 9    |



UNIVERSITY OF VIRGINIA LIBRARY



X004872820



## CHAPTER 1

### INTRODUCTION

---

#### 1-1. Scope

This manual provides instructions for mounting the installation unit (FSN 5820-082-3475) that permits mounting Radio Set AN/-GRC-106 in Truck, 1/4-ton, 4 by 4, M151.

#### 1-2. Index of Publications

Refer to the latest issue of DA Pam 310-4 to determine whether there are new editions, changes, or additional publications pertaining to this equipment. DA Pam 310-4 is a current index of technical manuals, technical bulletins, supply manuals, (types 7, 8, and 9), supply bulletins, lubrication orders, and modification work orders available through publications supply channels. The index lists the individual parts (-10, -20, -35P etc) and the latest changes to and revisions of each publication.

#### 1-3. Forms and Records

*a. Reports of Maintenance and Unsatisfactory Equipment.* Use equipment forms and

records in accordance with instructions in TM 38-750.

*b. Report of Damaged or Improper Shipment.* Fill out and forward DD Form 6 (Report of Damaged or Improper Shipment) as prescribed in AR 700-58 (Army), NAVSAND DA Publication 378 (Navy), and AFR 71-4 (Air Force).

*c. Reporting of Equipment Manual Improvements.* The direct reporting by the individual user of errors, omissions, and recommendations for improving this manual is authorized and encouraged. DA Form 2028 (Recommended Changes to DA Publications) will be used for reporting these improvement recommendations. This form will be completed by using pencil, pen, or typewriter, and forwarded direct to Commanding General, U.S. Army Electronics Command, ATTN: AMSEL-MR-(NMP)-MA, Fort Monmouth, N. J. 07703..



## CHAPTER 2

### INSTALLATION

---

#### Section I. SERVICE UPON RECEIPT OF EQUIPMENT

##### 2-1. Unpacking

Move the packing boxes close to the location where the installation is to take place and unpack the parts of the installation unit. Be careful not to lose any of the parts.

##### 2-2. Checking Unpacked Equipment

a. Inspect the equipment for damage incurred during shipment. If the equipment has been damaged, report the damage on DD Form 6 (para 1-3).

b. See that the equipment is complete as listed in the packing slip. If a packing slip is not available, the completeness of the installation unit can be determined by comparing the

parts received with the items listed on the installation drawing (fig. 2-4). Report all discrepancies in accordance with TM 38-750. Shortage of a minor assembly or part that does not affect proper installation or functioning of the equipment should not prevent the equipment from being installed.

c. When vehicles with radio sets are to be turned in or transferred, communication equipment will be removed and reinstalled in new replacement vehicles. Additional items which are required to complete installations should be requisitioned as individual items. To determine the Federal stock number of authorized items in the installation unit, refer to SB 11-131.

#### Section II. EQUIPMENT INSTALLATION

##### 2-3. Tools Required for Installation

The tools required for installation of Radio Set AN/GRC-106 are a part of Tool Kits, Radar and Radio Repairman TK-87( )/U, and Supplementary, Radar and Radio Repair, TK-88( )/U. The following additional items are needed:

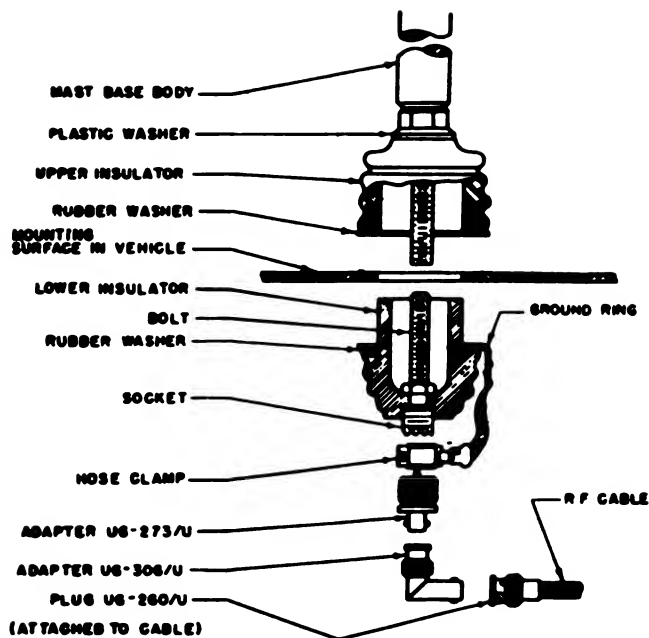
- a. 1 electric drill (3/8 inch).
- b. 1 set of drill bits (1/16 inch to 3/8 inch).

##### 2-4. Installation Instructions

a. To accomplish the installation, follow the instructions shown on figures 2-1 through 2-4.

b. The following additional information is provided:

- (1) The positive terminal of the 24-volt vehicle battery is marked with a plus (+) and is larger in diameter than the negative (-) terminal.
- (2) To drill the correct size holes for the sheet metal screws which hold the plastic cable clamps, select a drill bit that is slightly *smaller* in diameter than the screw.
- (3) When the installation is completed, check the tightness of all bolts and screws.



#### ASSEMBLY INSTRUCTIONS

1. REPLACE ALL ITEMS OF MAST BASE MP-65(1) EXCEPT THE MAST BASE BODY WITH ADAPTER KIT M-459 THIS STEP IS NOT REQUIRED FOR LATE PRODUCTION MODELS OF MP-65(1) WHICH ARE ALREADY EQUIPPED WITH A COAXIAL TYPE SOCKET WITH REMOVABLE BINDING POST ASSEMBLY.
2. PLACE ONE LARGE RUBBER WASHER AND THE UPPER INSULATOR OVER THE MOUNTING HOLE.
3. PLACE THE SMALL PLASTIC WASHER ON THE STEM OF THE MAST BASE BODY.
4. INSERT THE MAST BASE BODY INTO THE HOLE IN THE UPPER INSULATOR.
5. PLACE THE OTHER LARGE RUBBER WASHER ON THE LOWER INSULATOR.
6. PLACE THE GROUND RING ON TOP OF THE WASHER. GROUND RING IS NOT REQUIRED WHEN R F CABLE CG-500/U IS EMPLOYED.
7. INSERT THE LOWER INSULATOR INTO THE MOUNTING HOLE FROM UNDERNEATH.
8. ASSEMBLE THE MAST BASE BY HOLDING THE LOWER INSULATOR AND TURNING THE MAST BASE BODY UNTIL THE MAST BASE IS SECURE.

#### TO ATTACH ANTENNA LEAD-IN TO MAST BASE

1. UNSCREW BINDING POST ASSEMBLY FROM LOWER INSULATOR AND DISCARD.
2. ATTACH ADAPTER US-273/U TO THE ADAPTER SOCKET ON THE LOWER INSULATOR.
3. SLIP NOSE CLAMP OVER ADAPTER AND TIGHTEN SECURELY. NOSE CLAMP IS NOT REQUIRED WHEN R F CABLE CG-500/U IS USED.
4. ADAPTER US-306/U MAY BE ATTACHED TO ADAPTER US-273/U IF A RIGHT ANGLE CONNECTOR IS DESIRED.
5. ATTACH BNC CONNECTOR (PLUG US-260/U ON THE ANTENNA LEAD-IN TO ADAPTER US-273/U OR US-306/U).

TM2300-351-15-1-1

Figure 2-1. Assembly instructions for Mast Base MP-65(1) (for antenna cable connectors using BNC connectors).

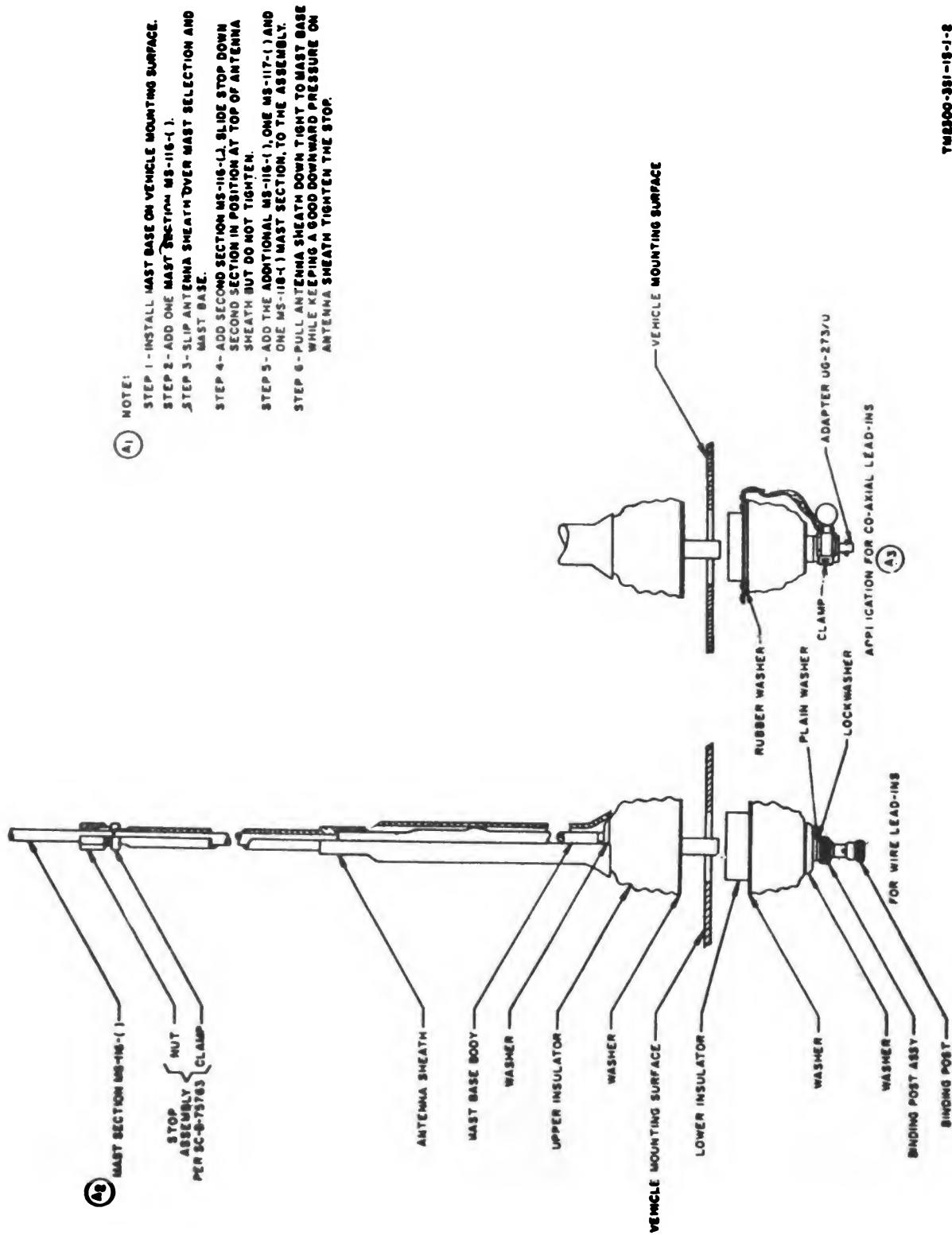
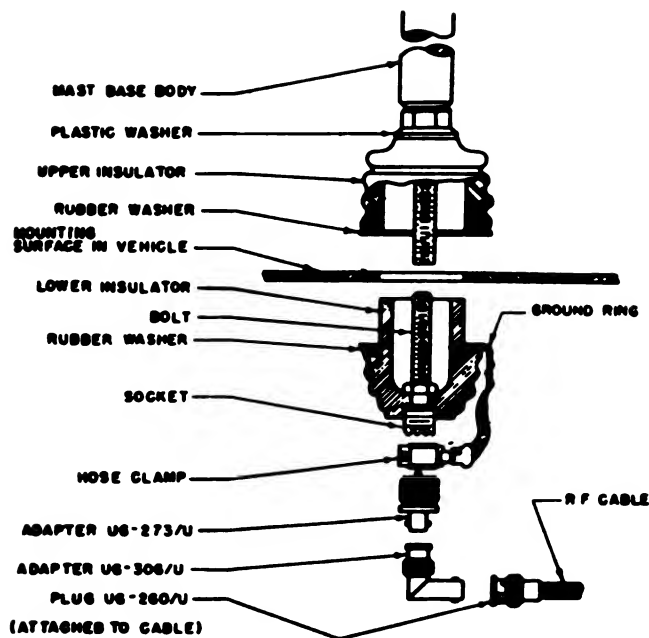


Figure 8-6. Antenna assembly procedure.

TM 2300-351-15-1-2





#### ASSEMBLY INSTRUCTIONS

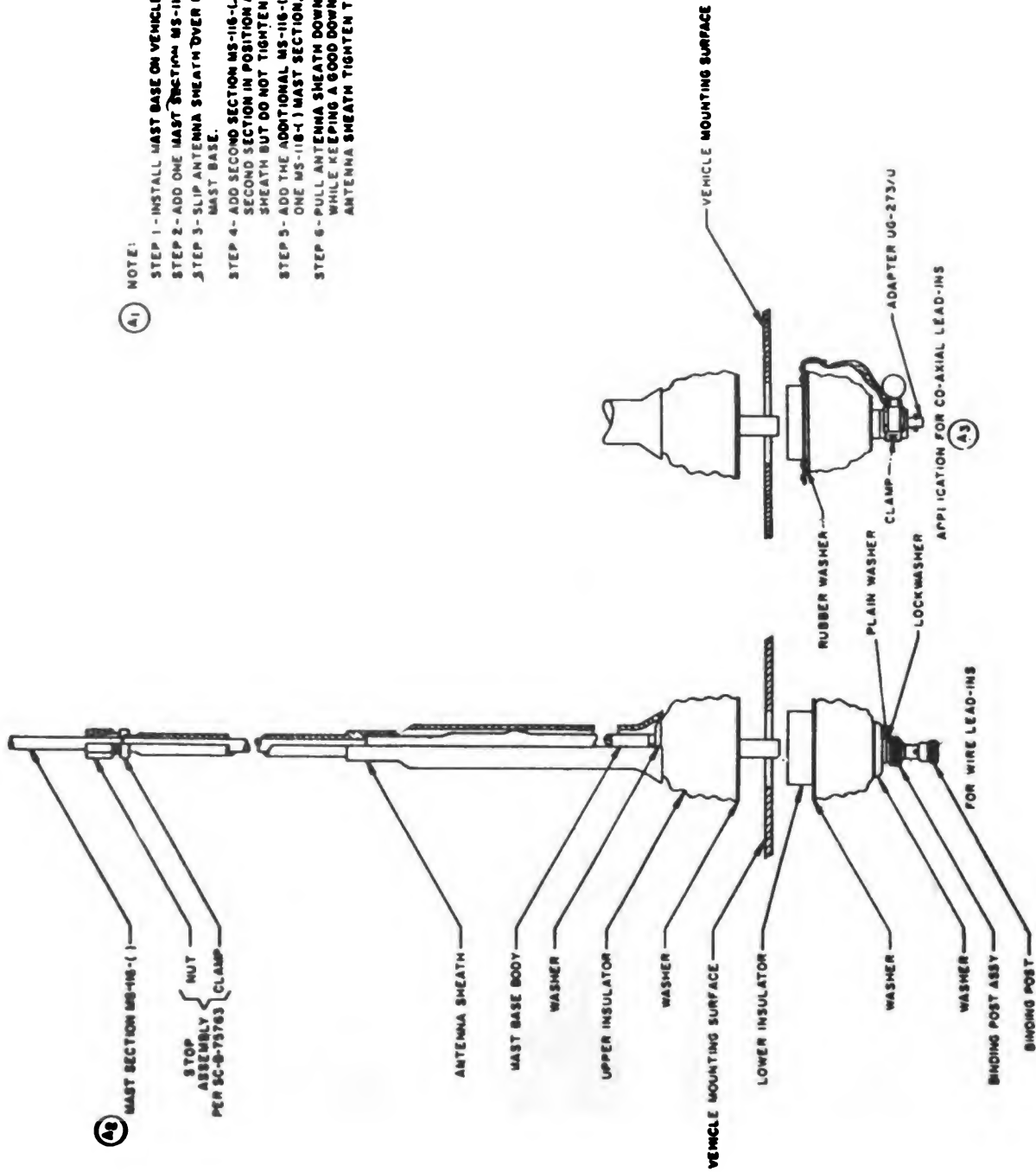
1. REPLACE ALL ITEMS OF MAST BASE MP-65( ) EXCEPT THE MAST BASE BODY WITH ADAPTER KIT M-459 THIS STEP IS NOT REQUIRED FOR LATE PRODUCTION MODELS OF MP-65( ) WHICH ARE ALREADY EQUIPPED WITH A COAXIAL TYPE SOCKET WITH REMOVABLE BINDING POST ASSEMBLY.
2. PLACE ONE LARGE RUBBER WASHER AND THE UPPER INSULATOR OVER THE MOUNTING HOLE.
3. PLACE THE SMALL PLASTIC WASHER ON THE STEM OF THE MAST BASE BODY.
4. INSERT THE MAST BASE BODY INTO THE HOLE IN THE UPPER INSULATOR.
5. PLACE THE OTHER LARGE RUBBER WASHER ON THE LOWER INSULATOR.
6. PLACE THE GROUND RING ON TOP OF THE WASHER. GROUND RING IS NOT REQUIRED WHEN R F CABLE CG-566/U IS EMPLOYED.
7. INSERT THE LOWER INSULATOR INTO THE MOUNTING HOLE FROM UNDERNEATH.
8. ASSEMBLE THE MAST BASE BY HOLDING THE LOWER INSULATOR AND TURNING THE MAST BASE BODY UNTIL THE MAST BASE IS SECURE.

#### TO ATTACH ANTENNA LEAD-IN TO MAST BASE

1. UNSCREW BINDING POST ASSEMBLY FROM LOWER INSULATOR AND DISCARD.
2. ATTACH ADAPTER US-273/U TO THE ADAPTER SOCKET ON THE LOWER INSULATOR.
3. SLIP HOSE CLAMP OVER ADAPTER AND TIGHTEN SECURELY. HOSE CLAMP IS NOT REQUIRED WHEN R F CABLE CG-566/U IS USED.
4. ADAPTER US-306/U MAY BE ATTACHED TO ADAPTER US-273/U IF A RIGHT ANGLE CONNECTOR IS DESIRED.
5. ATTACH BNC CONNECTOR (PLUS US-260/U ON THE ANTENNA LEAD-IN TO ADAPTER US-273/U OR US-306/U).

TM2300-351-15-1-1

Figure 2-1. Assembly instructions for Mast Base MP-65( ) (for antenna cable connectors using BNC connectors).



NOTE:

- STEP 1 - INSTALL MAST BASE ON VEHICLE MOUNTING SURFACE.
- STEP 2 - ADD ONE MAST SECTION MS-116-1.
- STEP 3 - SLIP ANTENNA SHEATH OVER MAST SELECTION AND MAST BASE.
- STEP 4 - ADD SECOND SECTION MS-116-1. SLIDE STOP DOWN SECOND SECTION IN POSITION AT TOP OF ANTENNA SHEATH BUT DO NOT TIGHTEN.
- STEP 5 - ADD THE ADDITIONAL MS-116-1, ONE MS-117-1 AND ONE MS-118-1 MAST SECTION, TO THE ASSEMBLY.
- STEP 6 - PULL ANTENNA SHEATH DOWN TIGHT TO MAST BASE WHILE KEEPING A GOOD DOWNWARD PRESSURE ON ANTENNA SHEATH TIGHTEN THE STOP.

(A1)

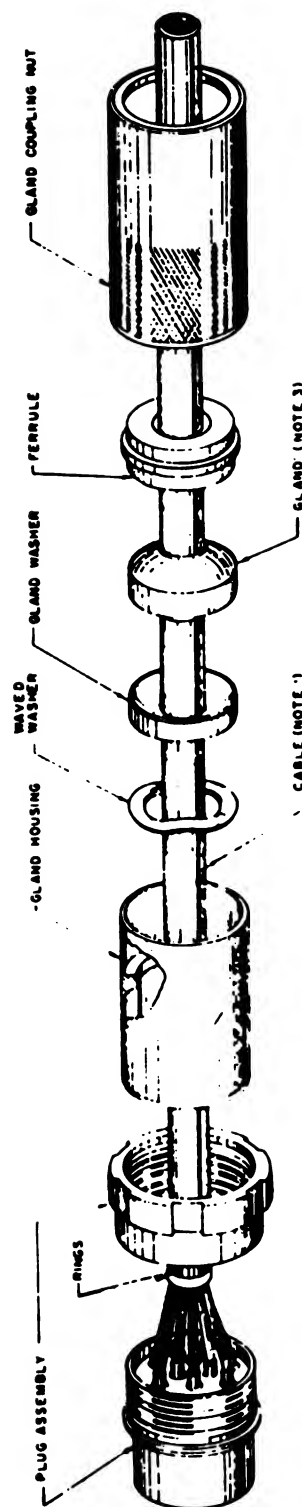
(A3)

Figure 8-8. Antenna assembly procedure.

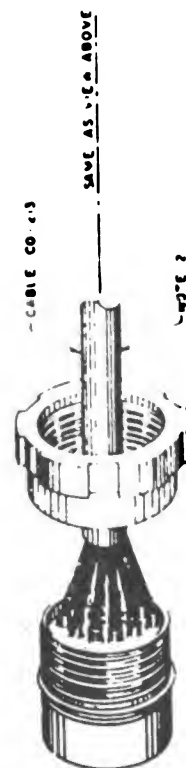
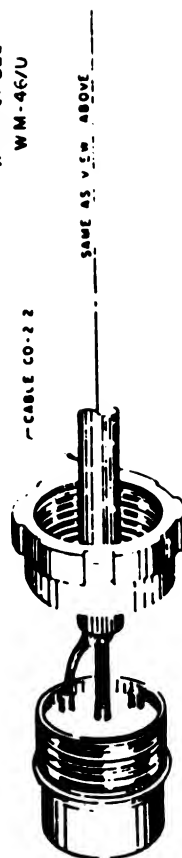
JM2300-351-15-1-2

NOTE

1. PREPARE CABLE PER SC-D-28209
  2. PREPARE CABLE PER SC-A-9103
  3. USE LUBRICANT "PETROLIUM, WHITE, PRAMEL," PER FEDERAL SPEC. VV-B-236 OR EQUAL IN CASE OF TIGHT FIT.
- IMPORTANT CAUTION SHOULD BE EXERCISED IN TIGHTENING THE COUPLING NUT OF THE ACCESSORY ASSEMBLY TO THE PLUG ASSEMBLY. ANCHOR CABLE AND PLUG ASSEMBLY IN A STATIC POSITION AND ROTATE THE GLAND COUPLING NUT BY HAND CLOCKWISE TO TIGHTEN GROMMET SHUGLY AGAINST THE CABLE, WITHOUT EXCESSIVE FORCE.



EXPLODED VIEW OF PLUG ASSEMBLY  
WITH CABLE  
WM-46/U



TM 2300-351-15-1-3

Figure 2-3. Assembly of waterproof vehicle terminal box plugs.





## APPENDIX

### REFERENCES

---

|                   |  |
|-------------------|--|
| DA Pam 310-4      | Index of Technical Manuals, Technical Bulletins, Supply Manuals (types 7, 8, and 9), Supply Bulletins, Lubrication Orders, and Modification Work Orders. |
| SB 11-131         | Vehicular Radio Sets and Authorized Installations.   |
| SB 38-100         | Preservation, Packaging, and Packing Materials, Supplies, and Equipment Used by the Army.  |
| TB SIG 364        | Field Instructions for Painting and Preserving Electronic Command Equipment.   |
| TM 11-5820-520-12 | Operator and Organizational Maintenance Manual Radio Set AN/GRC-106.   |
| TM 38-750         | Army Equipment Record Procedures   |

By Order of the Secretary of the Army:

HAROLD K. JOHNSON,  
*General, United States Army,*  
*Chief of Staff.*

Official:

J. C. LAMBERT,  
*Major General, United States Army,*  
*The Adjutant General.*

Distribution:

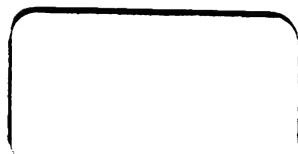
*Active Army:*

|                            |                    |
|----------------------------|--------------------|
| CNGB (1)                   | 336th Sig Det (10) |
| CofSptS (1)                | 363d Sig Det (10)  |
| USAMB (10)                 | 364th Sig Det (10) |
| USACDCCEA, (1)             | 365th Sig Dep (10) |
| USACDCCEA, Ft Huachuca (1) | 369th Sig Det (10) |
| USAECOM (30)               | Depots (2) except  |
| USACDCEC (10)              | TOAD (25)          |
| 1st LOGCOMD (15)           | SAAD (25)          |
| 9th LOGCOMD (10)           | LBAD (25)          |
| EUSA (10)                  | LEAD (7)           |
| 39th Sig Bn (10)           | Sig FLDMS (1)      |
| 379th Sig Bn (10)          | USAELL (3)         |
| 128th Sig Co (10)          | USASPTCP (11)      |

NG: None.

USAR: None.

For explanation of abbreviations used see AR 320-50.





1. The first part of the report is a general introduction to the subject of the study.

2. The second part of the report is a detailed description of the methods used in the study.

3. The third part of the report is a discussion of the results of the study.

4. The fourth part of the report is a conclusion and a list of references.

5. The fifth part of the report is a list of appendices.

6. The sixth part of the report is a list of figures and tables.

7. The seventh part of the report is a list of abbreviations and symbols.